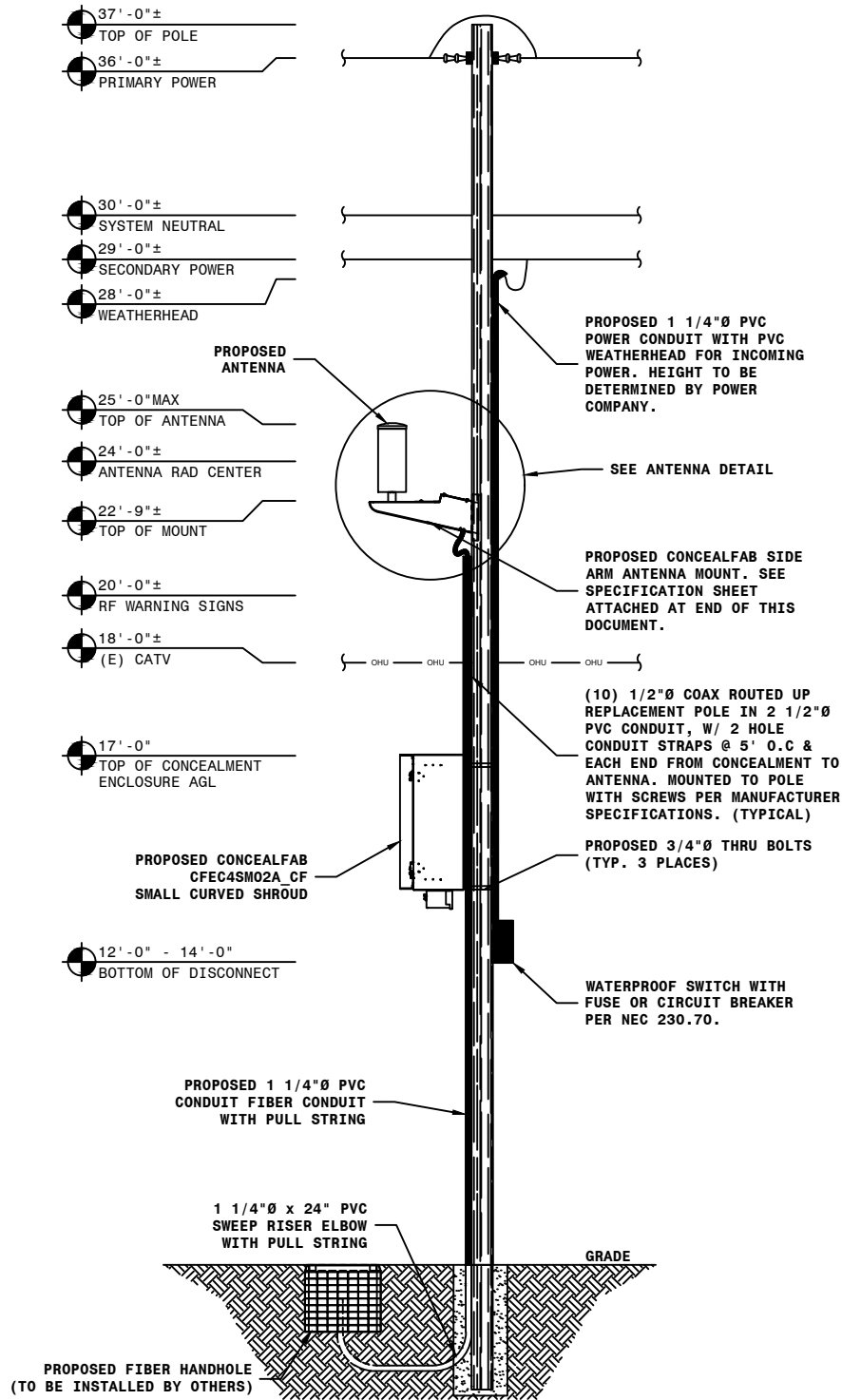


# WIRELESS COMMUNICATION FACILITY STANDARD 45 FOOT CLASS 2 POLE



**POLE ELEVATION**

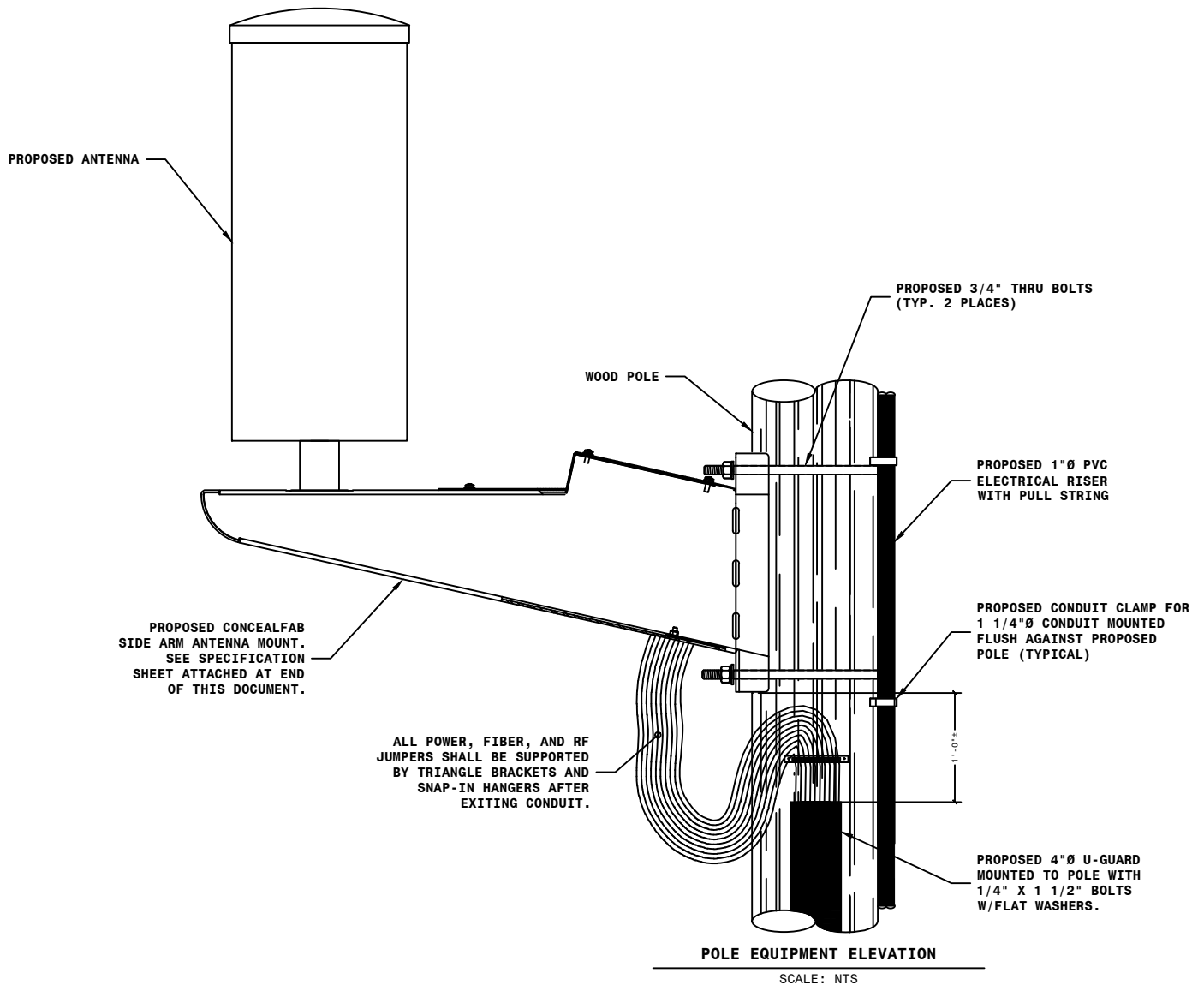
SCALE: NTS



APPR BY:	DWG	NO. OH-JU-WIFI004A	
CHECKED BY:	DG	PLOT: NONE	SH. 1 OF 2
DRAWN BY:	RS		

NO.	DATE:	REVISION	BY:	APPR:
-----	-------	----------	-----	-------

# WIRELESS COMMUNICATION FACILITY ANTENNA DETAIL



**NOTES:**

1. ANTENNA MUST BE INSTALLED BY A QUALIFIED CONTRACTOR TO WORK IN THE COMMUNICATION SPACE.
2. POLE LOCATION MUST BE APPROVED BY CONWAY CORP. DO NOT INSTALL ANTENNA ON EQUIPMENT POLES SUCH AS CAPACITOR BANKS, RECLOSERS, SWITCHES, TRANSFORMERS, U.G. RISERS, POWER SUPPLIES, AMI COLLECTORS, ETC. POLE LOCATIONS MUST BE BUCKET TRUCK ACCESSIBLE.
3. ONLY ONE ANTENNA PER POLE ALLIED.
4. ONE RF CAUTION SIGN, MEETING IEEE C95.2, MUST BE INSTALLED ON WI-FI EQUIPPED POLES.
5. A MINIMUM CLASS 2 POLE IS REQUIRED. POLE HEIGHTS EXCEEDING 35' ABOVE GROUND ARE NOT ALLOWED.
6. ALL ANTENNA DESIGNS MUST BE APPROVED BY CONWAY CORP.
7. ALL ANTENNAS AND ANCILLARY EQUIPMENT SHALL BE LABELED WITH THE OWNER'S NAME AND CONTACT INFORMATION, INCLUDING AN EMERGENCY CONTACT NUMBER.
8. ANTENNA LOCATIONS CANNOT VIOLATE EXISTING JOINT USE ALLOCATIONS OR AGREEMENTS WITH OTHER JOINT USE PARTIES.
9. ALL WI-FI EQUIPMENT (INCLUDING ANTENNA) SHALL MAINTAIN A MINIMUM OF FORTY-TWO (42) INCHES OF SEPERATION BELOW ALL CONWAY CORP CONDUCTORS, INCLUDING DRIP LOOPS.



APPR BY:	DWG	<b>NO. OH-JU-WIFI004B</b>
CHECKED BY:	DG	
DRAWN BY:	RS	
PLOT: NONE		SH. 2 OF 2

NO.	DATE:	REVISION	BY:	APPR: